

USA Graduates Contribute to Alabama and Nationally

Terrance Tumpey, Ph.D.

(Basic Medical Sciences) Class of 1997

- Senior microbiologist at the Centers for Disease Control (CDC)
- A World authority on the avian influenza virus
- Successful in characterizing the strain of human flu that killed an estimated 50 million people in 1918
- His work is key to developing strategies and vaccines that will prevent future influenza pandemics.
- Featured on NOVA(PBS) and CNN explaining his research.

Mike Dow, M.B.A.

(Business Administration) Class of 1977

- Co-founder, director, and a major stockholder of QMS Inc., a manufacturer of computer printers and software.
- Mobile's mayor for 16 years. His administration led the city through a successful downtown revitalization and tourism effort.

Neil Henderson, M.S.

(Computer and Information Sciences) Class of 1990

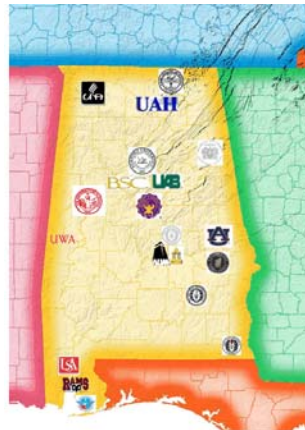
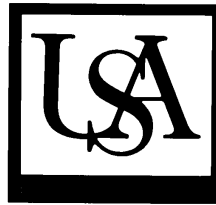
- Co-founder and General Manager of the Embedded Systems Division of Mentor Graphics, Inc. Previously known as Accelerated Technology, this company creates and sells embedded operation computer software systems. More than 80 USA alumni work at the company.
- Supports USA School of Computer and Information Sciences by providing more than \$300,000 in equipment and \$150,000 in graduate assistantships.

What can You do to Help Graduate Education in Alabama?

Contact Dr. Harrison

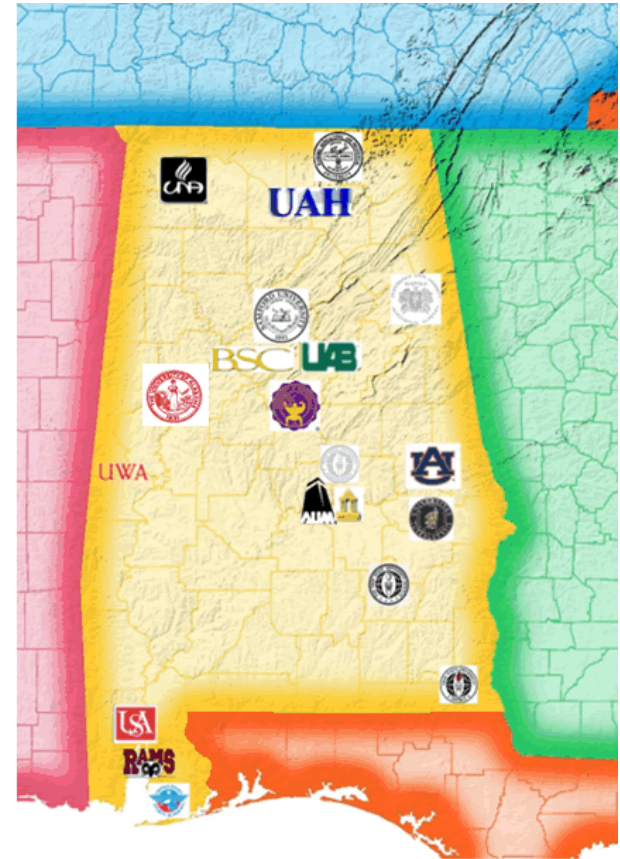
(251) 460-6310

kharrison@southalabama.edu



Presentation prepared by the Alabama
Council of Graduate Deans and the
USA Graduate School.

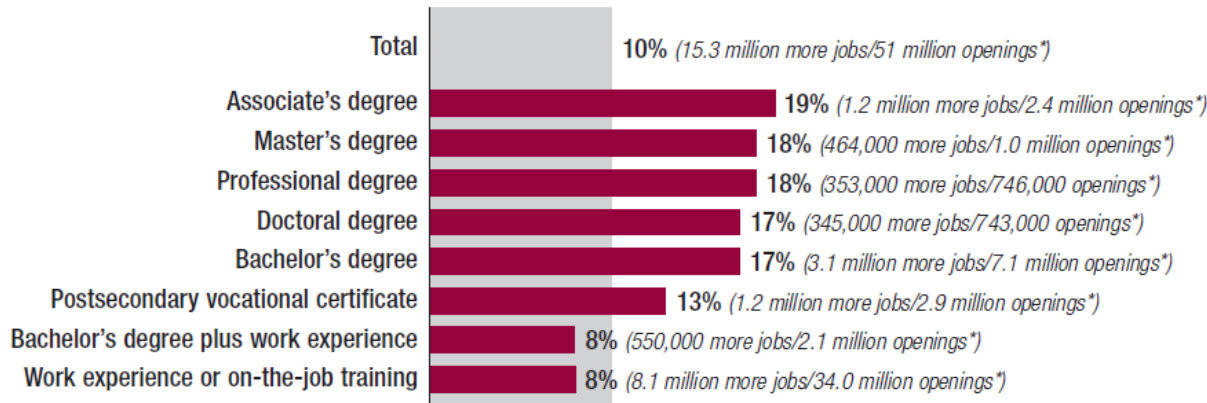
Graduate Education: It's a Great Investment!



B. Keith Harrison, Ph.D.
Dean, USA Graduate School

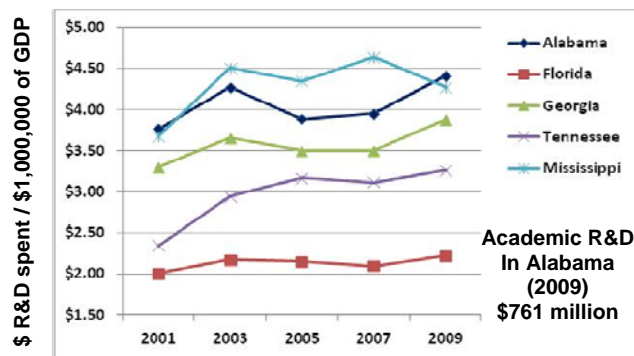
Holders of advanced degrees will be in high demand in the next 5 years

Projected Increases in Employment by Education and Training Required, United States, 2008-2018



SREB Factbook 2011, p. 68. http://publications.sreb.org/2011/2011_Fact_Book_webversion.pdf

Academic R&D Expenditures per \$1,000,000 of GDP Alabama 2001-2009



Source: data taken from National Center for Higher Education Management Systems. www.higheredinfo.org. Data retrieved on 3/5/09 and 4/10/12.

We're Training Alabama Citizens for the Requirements of the Alabama Economy

Total Graduate Students in Alabama: 32,790

20,671 (63%)

From Alabama:

12,119 (37%)

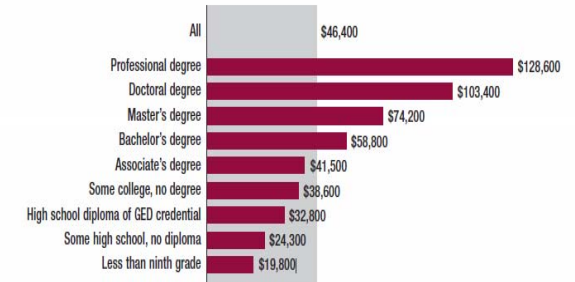
From elsewhere:

- Adjoining states 5,005 15%
- Non-adjoining states 4,355 13%
- Non-US Citizens 2,759 8%

(Both Masters and Doctoral students) Data from Alabama Commission on Higher Education: Fall, 2011. <http://www.ache.alabama.gov/Information/StatisticalInfo/SSSFall2011/All-Graduates.pdf>

Having an Advanced Degree means Higher Pay and Prosperity

Average Annual Earnings of Adults Ages 25 or Older, United States, 2009



SREB Factbook 2011, p. 67

Projected Earnings Differential for Alabama MS and Doctoral Graduates—2011-2012

Degree	Total Degrees	Projected Lifetime Earnings Differential
Master's + Post-Masters	8870	\$3.55 billion
Doctoral	1733	<u>\$1.73 billion</u>
		Total: \$5.28 billion

If 64% of these 2011-2012 graduates remain in Alabama after graduation:

\$3.4 billion more earned in and spent in Alabama

Data on Degree Completions 2011-2012, taken from the Alabama Commission on Higher Education and includes graduates of public and private universities in Alabama.